






1

PROJECT PURPOSE

- Develop a cohesive vision
- Develop consistency through the corridor
- Pursue grant funding



2

LONG RANGE PLAN GOALS



- Inventory of what is existing today + funded projects
- Update the plan for completing the trail to Goodhue County and Prairie Island Indian Community
- Enhance the trail with connections, amenities, trailheads, gateways
- Add signage, art, and interpretation
- Evaluate and prioritize opportunities for natural resource and water quality enhancements
- Consider operations and maintenance issues and recommendations
- Activate the greenway with infrastructure, events, and programs










FUNDED INTERPRETIVE NODES

3

LONG RANGE PLAN GOALS



TRAILHEADS AND GATEWAYS

• TRAIL ACCESS	• PARKING	• PICNIC TABLES
• RESTROOMS	• WATER	• TRASH & RECYCLING
• SIGNAGE	• BIKE PARKING	






4

LONG RANGE PLAN GOALS



ART AND INTERPRETATION

OPPORTUNITY FOR ART



OPPORTUNITY FOR ART





Dakota ways of seeing interpretive installation on the Minnesota River Greenway


Interpretive Plans have been completed for the Minnesota River Greenway, the Mississippi River Greenway, and the Veterans Memorial Greenway

Carleough Environmental Magnet School students painting the mural at the Charlton Tunnel on the River To River Greenway



5

OVERVIEW OF THE GREENWAY VISION



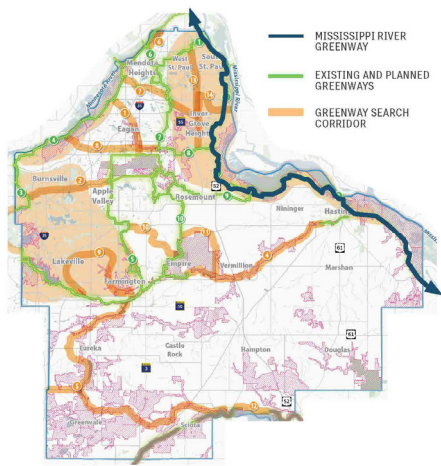
GREENWAY VISION

A multi functional open space corridor that provides multiple community benefits in the areas of water quality, habitat, recreation, and non-motorized transportation

Objectives Include

- Enhancing and interpreting habitat
- Connecting wildlife corridors
- Filtering and storing stormwater
- Creating a safe, amenity-rich trail network that meets needs of multiple users in all seasons
- Creating an inviting, connected, memorable and nature-based recreation system
- Activating with events, places and interactive features (fishing, birding, nature play, exercise, social places)

DAKOTA COUNTY 2050 GREENWAY VISION



— MISSISSIPPI RIVER GREENWAY

— EXISTING AND PLANNED GREENWAYS

— GREENWAY SEARCH CORRIDOR

6




7



8

MISSISSIPPI RIVER GREENWAY



GREENWAY USE

- GREENWAY USE NOW EXCEEDS PARK USE AND GROWING
- MRG IS ONE OF THE BUSIER REGIONAL TRAILS IN THE REGIONAL SYSTEM AND USE SHOULD CONTINUE TO GROW.

2024 METCOUNCIL COUNTS

GREENWAYS	
BIG RIVERS REGIONAL TRAIL	253,223
MISSISSIPPI RIVER GREENWAY REGIONAL TRAIL	701,441
RIVER TO RIVER GREENWAY REGIONAL TRAIL	333,656
LAKE MARION GREENWAY REGIONAL TRAIL	103,282
MINNESOTA RIVER GREENWAY REGIONAL TRAIL	134,128
NORTH CREEK GREENWAY REGIONAL TRAIL	82,011
	1,607,741


PARKS	
LAKE BYLLESBY REGIONAL PARK	258,100
LEBANON HILLS REGIONAL PARK	646,536
MIESVILLE RAVINE PARK RESERVE	119,964
SPRING LAKE PARK RESERVE	161,564
WHITETAIL WOODS REGIONAL PARK	93,684
THOMPSON COUNTY PARK	300,000
	1,579,848

HISTORIC COUNTS

GREENWAY	2011	2013	2015	2017	2019	2022	2023	2024
BIG RIVERS	142,700	132,100	116,400	151,400		140,607		253,223
MINNESOTA RIVER				67,100		104,766		134,128
MISSISSIPPI RIVER	27,000	70,900	110,000	207,700		251,911	530,701	701,441
NORTH CREEK						52,782		82,011
RIVER TO RIVER	32,700	20,700	19,900	110,800		310,658		333,656
LAKE MARION								103,282


9


COMMUNITY ENGAGEMENT



Engagement Methods

- Yard Signs Along the Trail
- Online Interactive Map
- In-Person Pop-Up Events
 - Dia de los Muertos Celebration
 - ROCC Resource Fair





Online Interactive Map Stats

Total visitors	Everyone who visited the questionnaire	256
Submitted respondents	People who got to the last page of the questionnaire and clicked "Submit"	44
Unsubmitted respondents	People who responded to at least one question in the questionnaire but did not click "Submit" at the end	8
Bounce visitors	People who entered the questionnaire but did not answer any questions	206

Figure 4.1 Online Interactive Map with All Submitted Responses

10

WHAT WE HEARD



Key Takeaways

- Strong appreciation for the Mississippi River Greenway
- Value natural settings (wooded areas, blufftop views, river overlooks, and wildlife experiences)
- Long, contiguous trail connections are seen as major strengths



Image from Dia De Los Muertos Celebration

Priorities for Improvement

- Safer routes (away from busy roadways)
- Improved trail condition and maintenance
- Better crossings/connections
- Clearer wayfinding and signage
- Expanded access to the river

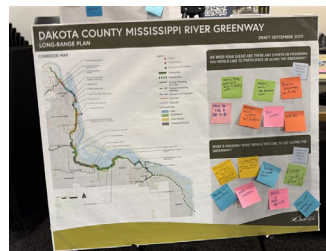


Image of Community Engagement Board from ROCC Resource Fair

11

WHAT WE HEARD



Desired Enhancements

- Additional off-road connections
- New bridges, boardwalks, and loop connections
- Small scale amenities and placemaking
 - Rest areas, water access, trash and dog waste stations
 - Public art, murals, and interpretive features
 - Pop-up events, programming, and partnerships with local businesses
- Interest in camping and bicycle touring amenities

12

PREVIOUS PLANNING

PLANS & PROJECTS

Projects and Plans along the trail over the years

- Interpretive Nodes
- Connecting Greenway Plans
- Adjacent Trails
- Park Plans

CORRIDOR-WIDE PLANNING

- 1989 MISSISSIPPI RIVER REGIONAL TRAIL PLAN
- 2009 HASTINGS - RED WING TRAIL MASTER PLAN
- 2014 MISSISSIPPI RIVER TRAIL INTERPRETIVE + EXPERIENCE DESIGN
- 2018 CONNECTING PEOPLE TO THE MISSISSIPPI RIVER
- 2020 2050 DAKOTA COUNTY PARKS AND NATURAL SYSTEMS VISION PLAN
- 2026 MISSISSIPPI RIVER GREENWAY NATURAL RESOURCES MANAGEMENT PLAN

13

PLAN IDEAS - ACTIVATION

Enhance Greenway with Amenities

- Add Overlooks
- Add Fishing Areas
- Add Birding Spots

SECTION 01 SOUTH ST PAUL

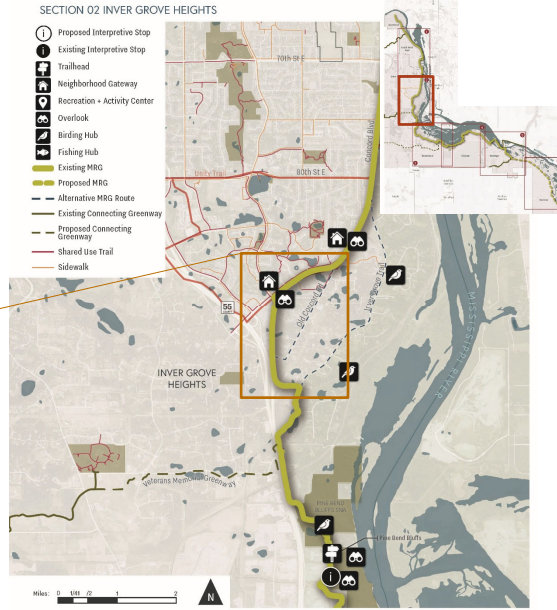
14

PLAN IDEAS - ALIGNMENTS



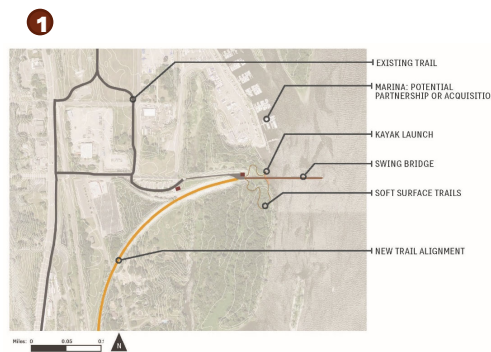
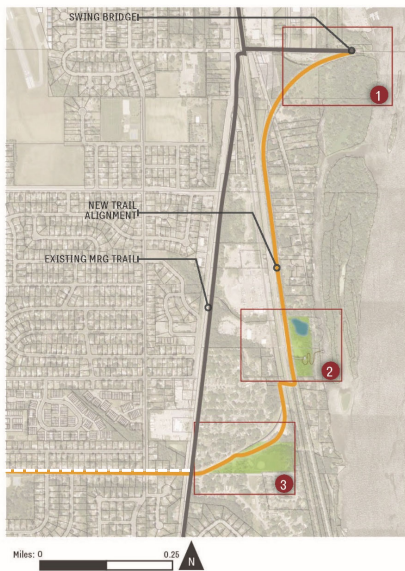
Recommended Alignment changes

- Lower Rail Extension
- Old Concord
- Long Term with development and or land preservation opportunities




15

PLAN IDEAS - ALIGNMENT




16

PLAN IDEAS – WATER QUALITY




2



- Water quality opportunity
- Adds river access
- Partnership with city of Inver Grove Heights

17


PLAN IDEA

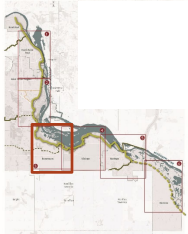


Enhance Greenway with Amenities

- In coordination with private landowners
- Flint Hills etc.

SECTION 03 ROSEMOUNT





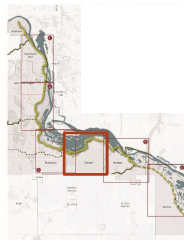
18

PLAN IDEAS - ACTIVATION



Enhance Greenway with Amenities

– In coordination with Spring Lake Park Long-range Plan

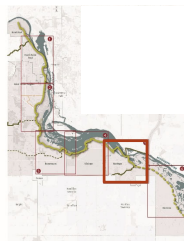


PLAN IDEAS - ACTIVATION



Enhance Greenway with Amenities

– Activate the riverfront



GREENWAY EXTENSION

Complete southern segment to Goodhue County border

- Build trail
- Include enhanced landscape, water quality, and restoration areas
- Add gateways and river access

21

PROGRAMING – NEW INITIATIVES

Programs/Events

- Expand signature events along the Greenway
- Create a corridor-wide race and/or fundraiser
- Support local partners through stewardship roles and small grants
- Support compatible commercial activity


Interpretation/Art

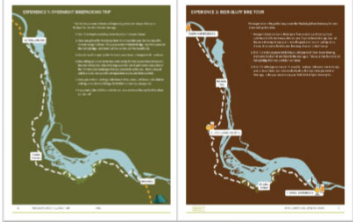
- Pop-up art at trailheads
- Community-partnered installations (i.e. MOSAIC)
- Seasonal art for winter activation
- Interactive augmented reality interpretation

22

Dakota
COUNTY

IMPROVED MARKETING/INFO





Online Materials/Marketing

- Greenway education/awareness
- River tourism experience
- Online flyover and virtual preview experiences
- Real-time river conditions

Self Guided Tours (Themes)

- Curated biking, walking, and paddle loops (pedal/paddle)
- Self-guided greenway art tour
- Augmented Reality tour

23

CONCEPTS

Dakota
COUNTY

PROPOSED CONCORD PARKWAY



PROPOSED OVERLOOK



24

CONCEPTS



Finish 2014 MRG Interpretive Plan

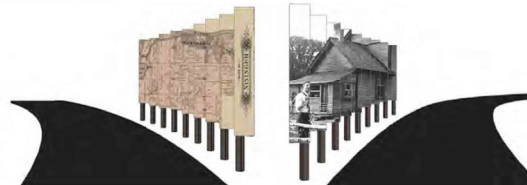
PROPOSED CANOPY WALK

SPRING LAKE PARK TREE CANOPY WALK STRUCTURE



TREE CANOPY WALK ENTRY FRAMES

LENTICULARS



Lenticulars, recommended in the 2014 Mississippi River Design + Experience Plan, could help enhance MRRT signature and connection to the river on the Lock Blvd section in Nininger Township

CONCEPTS



ART AND INTERPRETATION



OPPORTUNITY FOR ART

GREENWAY ACTIVATION

- SELF-DIRECTED PROGRAMMING
- GROUP RIDES
- FUN RUNS
- EVENTS
- FISHING
- BIRDING
- LOOP TRAILS
- WORK OUT STATIONS



INTEGRATE – INDIGENOUS THEMES



Supplement the 2014 MRG Interpretive Plan with Indigenous Themes

“Flowing Together: Stories of Nature, People, and Belonging”

Subtheme	Focus
Honor the First Voices	Uplift Dakota stories, knowledge, and living presence.
Follow the River’s Rhythm	Engage with the land and river as living relatives and changing ecosystems.
Weaving Many Stories	Celebrate shared cultural histories and contributions.
We Shape This Place Together	Foster belonging, shared care, and collective stewardship.

27

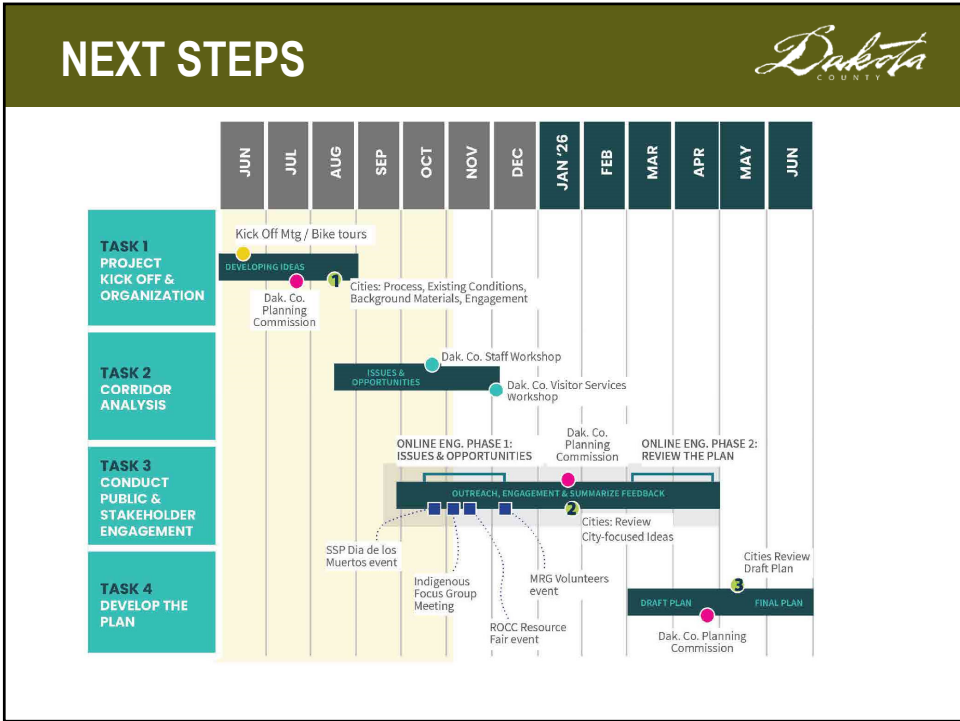
IMPLEMENTATION IDEAS



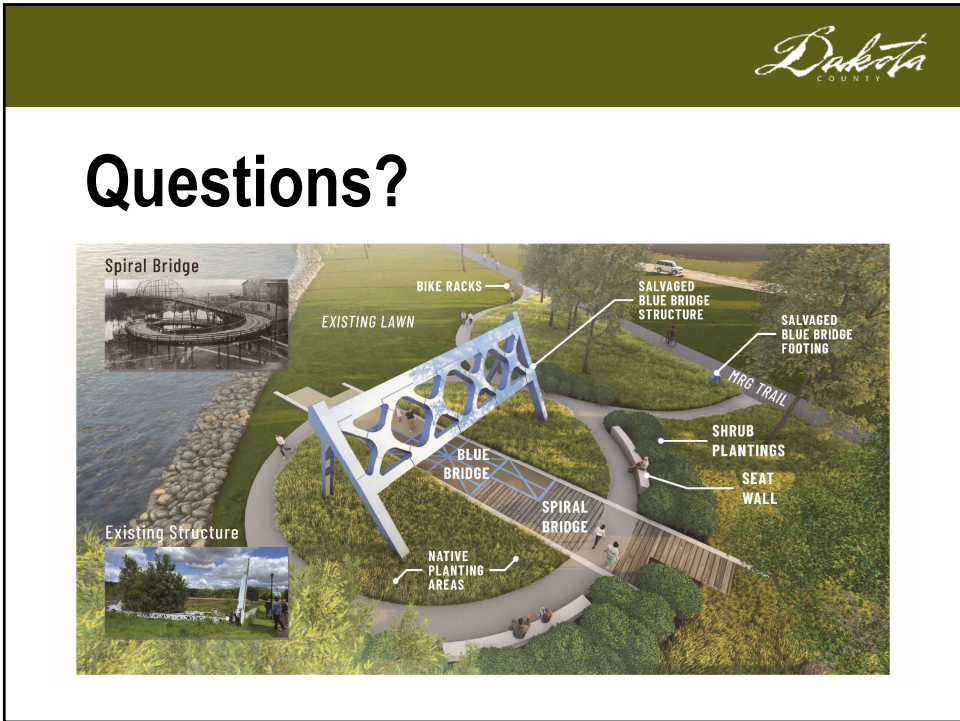
Funding and Implementation

- *Expand “Greenway Collaborative”:* Partner with our cities/agencies along corridor to activate greenway with programs and supporting investments that improve user experience
- *Grant Funding:* Position projects in plan for external funding opportunities. Link typical funding sources to project.

28



29



30